

Chillingsworth's Bicycle Race

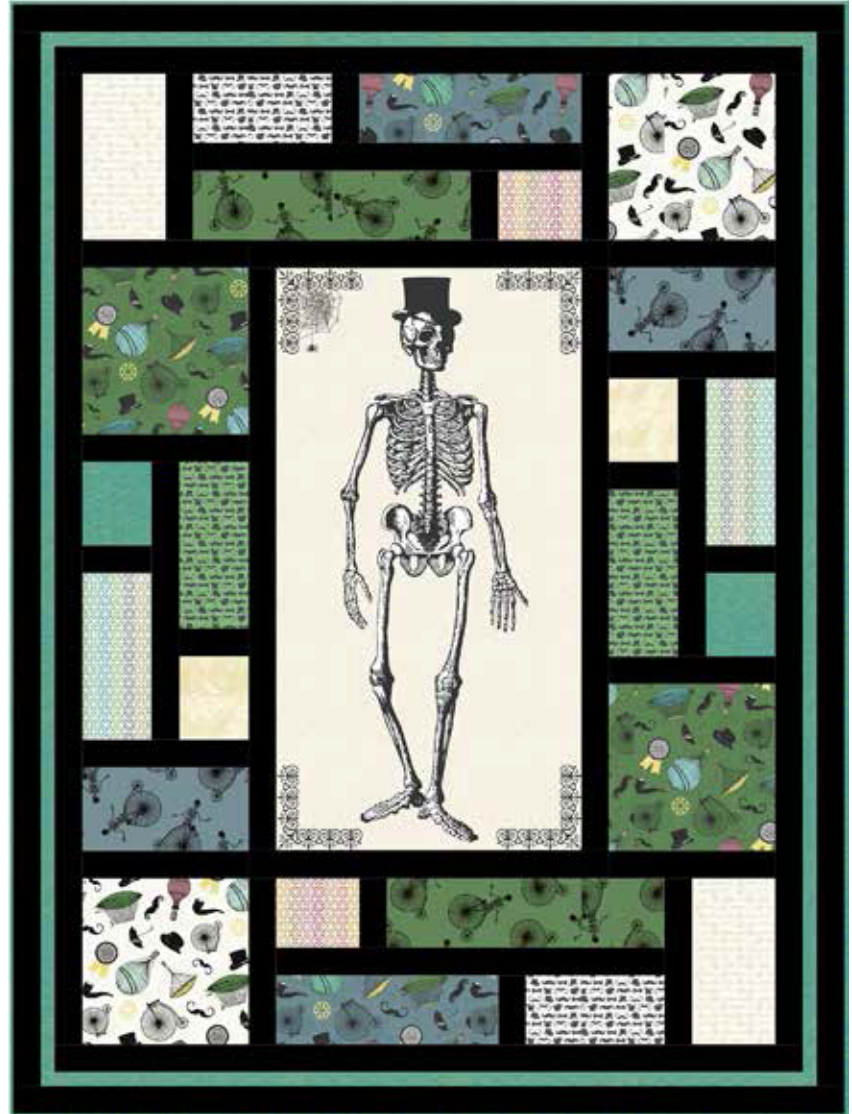


BY ECHO PARK PAPER CO

Chillingsworth's Bicycle Race
Quilt Design: **Tiffany Hayes**

Quilt Size: **60" x 80"**

andoverfabrics.com



About Chillingsworth's Bicycle Race

Mr. Chillingsworth arrived to compete at the Tour de France, only to find that his bicycle was slightly outdated. Ever the crafty one, Mr. Chillingsworth hustled his way to a medal-winning performance, with a little help from a magic umbrella, and a well-timed hot-air balloon detour.

— *Echo Park Paper Co*

andover



makower uk
The Henley Studio

Free Pattern Download Available

1384 Broadway New York, NY 10018
Tel. (800) 223-5678 • andoverfabrics.com

Chillingsworth's Bicycle Race Quilt



Introducing Andover Fabrics new collection:

CHILLINGSWORTH'S BICYCLE RACE by Echo Park Paper Co

Quilt designed by Tiffany Hayes

Quilt finishes 60" x 80"

This jaunty fellow with his sporty top hat will bring either a smile of delight or a shiver up your spine. Whatever emotions he evokes, you'll feel only satisfaction at the ease of construction. A fun mixture of novelty prints that include handlebar mustaches, pipes, and "Mr. Bones" riding an old-fashioned bike surrounds the center panel.

Cutting Directions

Note: Read assembly directions before cutting patches. All measurements are cut sizes and include ¼" seam allowances. Borders are cut the exact lengths required plus ¼" seam allowances. WOF designates the width of fabric from selvedge to selvedge (approximately 42" wide).

Fabric A

Fussy-cut (1) panel 22½" x 42½", cut crosswise

Fabric B

Cut (2) strips 5½" x 16½"

Fabric C

Cut (2) squares 12½" x 12½"

Fabric D

Cut (2) squares 12½" x 12½"

Fabric E

Cut (2) strips 6½" x 12½"

Fabric F

Cut (2) strips 5½" x 20½"

Fabric G

Cut (2) strips 5½" x 12½"

Fabric H

Cut (2) strips 5½" x 6½"

Fabric I

Cut (2) strips 5½" x 12½"

Fabric J

Cut (2) strips 6½" x 12½"

Fabric Requirements

		Yardage	Fabric
Fabric A	center	1 panel (⅔ yard)	7442-N
Fabric B	setting	fat ¼ yard	7758-C
Fabric C	setting	⅜ yard	7758-G
Fabric D	setting	⅜ yard	7758-L
Fabric E	setting	fat ¼ yard	7759-C
Fabric F	setting	fat ¼ yard	7759-G
Fabric G	setting	fat ¼ yard	7760-G
Fabric H	setting	fat ¼ yard	7760-LR
Fabric I	setting	fat ¼ yard	7761-G
Fabric J	setting	fat ¼ yard	7761-L
Fabric K	setting	fat ¼ yard	7761-LK
*Fabric L	setting, border	1¼ yards	A-C-Bluegrass
Fabric M	borders	2¼ yards	A-T-Magnum
Fabric N	setting	fat ¼ yard	1867-YL
Backing		5 yards	7759-L

*includes binding

Fabric K

Cut (2) strips 5½" x 10½"

Fabric L

Cut (8) strips 2½" x WOF for binding

Cut (2) borders 1½" x 74½", cut crosswise and pieced

Cut (2) borders 1½" x 56½", cut crosswise and pieced

Cut (2) strips 5½" x 6½"

Fabric M (Cut all strips lengthwise)

Cut (2) side borders 2½" x 76½"

Cut (2) side borders 2½" x 70½"

Cut (2) top/bottom borders 2½" x 60½"

Cut (2) top/bottom borders 2½" x 54½"

Cut (2) top/bottom sashes 2½" x 50½"

Cut (2) side sashes 2½" x 42½"

Cut (2) sashes 2½" x 28½"

Cut (2) sashes 2½" x 20½"

Cut (8) sashes 2½" x 12½"

Cut (8) sashes 2½" x 5½"

Fabric N

Cut (2) strips 5½" x 6½"

Backing

Cut (2) panels 34" x 88", pieced to fit quilt top with overlap on all sides

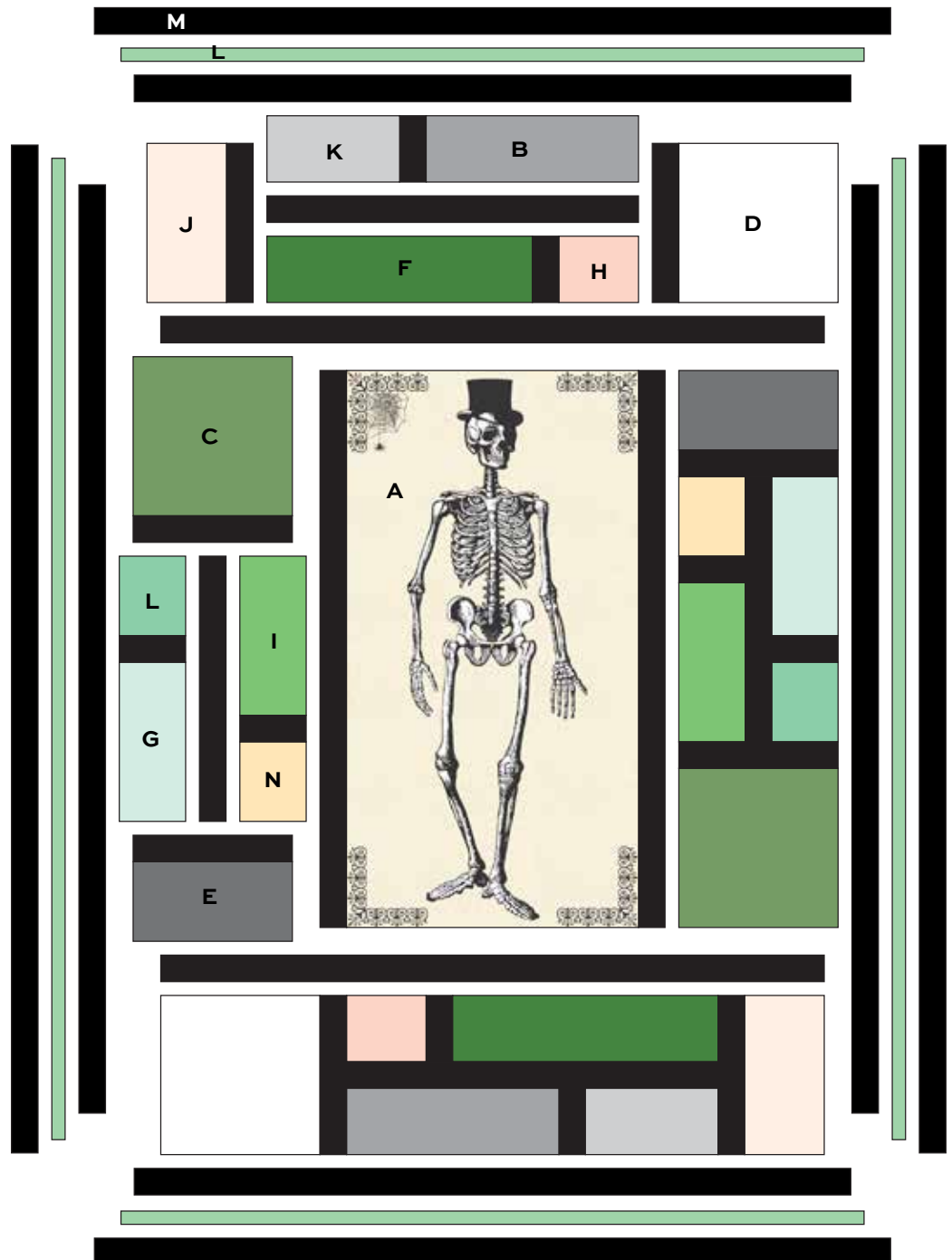
Chillingsworth's Bicycle Race Quilt

Making the Quilt

1. Fussy-cut the Fabric A panel, centering the skeleton and making sure the printed designs in the corners have the same amount of white background fabric around the edges. Sew the 42½"-long Fabric M sashes to the sides using a walking foot or even-feed foot to prevent puckering.
2. Referring to the Quilt Diagram, make the left side unit by sewing short Fabric M sashes between the L and G patches and between the I and N patches. Sew a 20½"-long sash in the middle. Sew a 12½" sash on top and bottom, and add the C and E patches as shown. Repeat to make a second side unit like this. Sew to the sides, turning the right side unit upside down. Sew the 50½"-long Fabric M sashes to the top and bottom.
3. Make the top pieced unit by sewing short sashes where needed, then adding the 28½" sashes in the middle. Make the bottom pieced unit like the top. Sew to the top and bottom, rotating the bottom unit as shown.
4. Sew the Fabric M 70½" borders to the sides, and sew the 54½" borders to the top and bottom. Sew the longer Fabric L borders to the sides and the shorter borders to the top and bottom. Repeat with the remaining Fabric M borders.

Finishing the Quilt

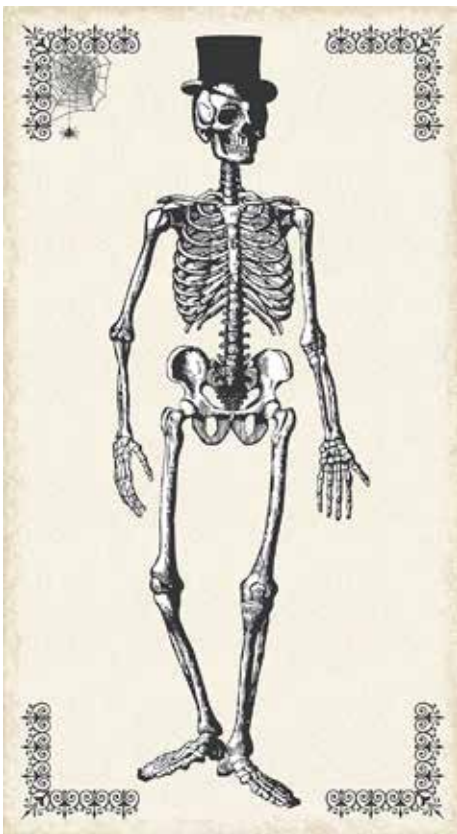
5. Layer the quilt with batting and backing and baste. Quilt in the ditch around borders and patches. Quilt around the printed motifs in the center panel and in the patches. Bind to finish the quilt.



Quilt Diagram

Chillingsworth's Bicycle Race

BY ECHO PARK PAPER



7442-N*



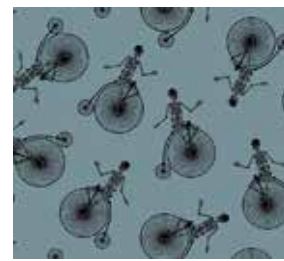
7758-C*



7758-G*



7758-L*



7759-C*



7759-G*



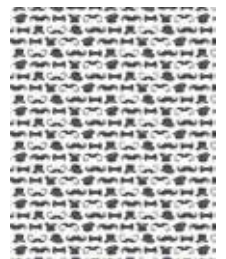
7759-L*



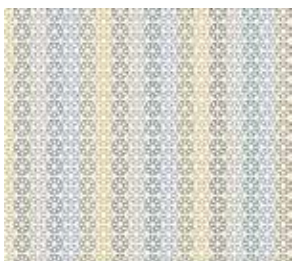
7761-C



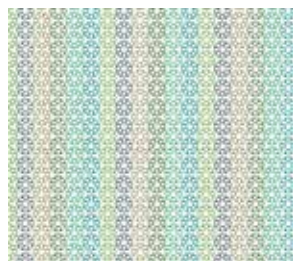
7761-G*



7761-LK*



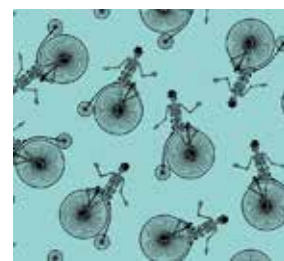
7760-C



7760-G*



7760-LR*



7759-T



7761-L*

Blend with additional Andover fabrics



1867-G34



A-T-TERRAIN



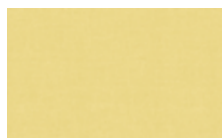
A-T-ZINFANDEL



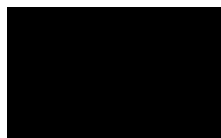
A-C-BLUEGRASS*



1867-YL*



A-C-MUSTARD



A-T-MAGNUM*

*Indicates fabrics used in quilt pattern
Fabrics shown are 10% of actual size.

andover

makower uk
The Henley Studio

Free Pattern Download Available

1384 Broadway New York, NY 10018
Tel. (800) 223-5678 • andoverfabrics.com